

Submitted by (1)  
on 2019-04-02T12:07:23Z  
as " 2000LC16+2000QE9-1.fits "  
(Submission 2621415)  
under Attribution 3.0 Unported

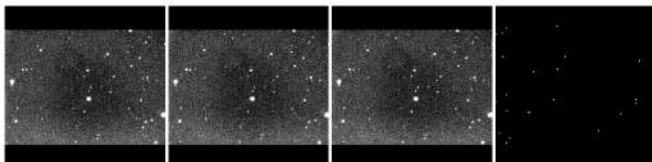
### Job Status

Job 3304226:  
**Success**

### Calibration

Center (RA, Dec): (344.449, 9.091)  
Center (RA, hms): 22<sup>h</sup> 57<sup>m</sup> 47.788<sup>s</sup>  
Center (Dec, dms): +09° 05' 26.562"  
Size: 16.2 x 10.8 arcmin  
Radius: 0.162 deg  
Pixel scale: 1.26 arcsec/pixel  
Orientation: Up is 170 degrees E of N  
WCS file: [wcs.fits](#)  
New FITS image: [new-image.fits](#)  
Reference stars nearby (RA,Dec table): [rdls.fits](#)  
Stars detected in your images (x,y table): [axy.fits](#)  
Correspondences between image and reference stars (table): [corr.fits](#)  
KMZ (Google Sky): [image.kmz](#)  
World Wide [view in](#)  
Telescope: [WorldWideTelescope](#)

### Nearby Images (View All)



### Comments

No comments.

Please [Sign In](#) to post comments.

